



**EVERY DEVICE. EVERY NETWORK. EVERY TEAM. CONNECTED LIKE NEVER BEFORE.**

# WAVE 5000

WAVE 5000 enables highly scalable, feature rich, enterprise grade push-to-talk (PTT) on broadband networks and devices so that critical, time-sensitive information flows quickly and securely between mobile workers, teams and citizens.

From two-way radios to smartphones, laptops to landlines, tablets to rugged handhelds, WAVE 5000 lets your users use the devices they already have and the networks they already subscribe to connect and talk to others both inside and outside of your communications environment.

**Wherever your personnel are, whatever they do, WAVE 5000 lets them connect and communicate with simple, secure, affordable PTT.**

## THE RIGHT DEVICE FOR THE JOB

We understand that personnel that use a radio system for operational purposes do not need to carry a ruggedized radio handset all of the time.

Perhaps you're the Chief of Police and you want to access ASTRO 25 or TETRA digital communications from your iPhone when at a conference.

Maybe you're a government agent working undercover. Your Android smartphone and earbuds would be ideal to connect to other tactical units while keeping you inconspicuous.

For every police officer on the beat, agent on a job or for hotel workers, warehouse staff and railroad maintenance crews on shift, there are many other supporting personnel that can provide support, often life-saving assistance, with PTT communications using smartphones, tablets or PCs from any location. WAVE 5000 makes it possible.

## BRIDGING TWO-WAY RADIO WITH BROADBAND NETWORKS

With WAVE 5000 you can experience game-changing functionality that lets you build and operate secure, highly-scalable solutions for today's most demanding communications environments:

### Extend Radio To Broadband

Extend workforce communications beyond radio to include modern devices and broadband networks for seamless communications in any location.

### Deploy Broadband PTT

Secure, 'over-the-top' PTT connecting smart devices over 3/4G LTE and WiFi networks delivers greater choice and flexibility when choosing a non-radio, carrier-independent communications solution.

### Connect Radio to Radio

Connect multiple, disparate two-way radio systems and remove barriers to communication interoperability and workforce collaboration.

## DATA SHEET

WAVE WORK GROUP COMMUNICATIONS  
WAVE 5000

## BUILDING YOUR WAVE 5000 SYSTEM

WAVE 5000 is a multi-component software platform and suite of applications for enabling the integration of existing and future communication technologies. The goal is simple – remove the technical barriers to secure instant PTT communication and enable anyone on any device to securely communicate across any IP network with any other device, in real time.

At its core, WAVE enables an almost unlimited number of simultaneous data streams within an IP network.

These streams, some for voice and some for system data, connect users and their devices so that you and your teams can enjoy a truly unified PTT communications environment that provides secure access to people, information and systems that are critical to their role and responsibilities.

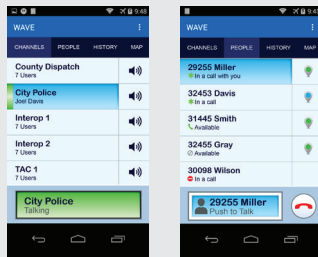
The implementation required to meet this goal requires a system with tremendous technical sophistication while maintaining its ease of use and implementation flexibility.

## WAVE 5000 CLIENT APPLICATIONS

### WAVE Communicators Enable Your Workforce to Connect and Collaborate

Whatever the device or available network, WAVE has client applications that meet the needs of all types of users. Called WAVE Communicators, these applications provide the user interface to a WAVE communications system:

### WAVE MOBILE COMMUNICATOR

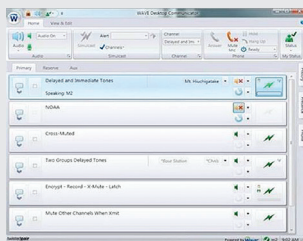


### Turn Your Apple or Android Device into a Multi-Channel PTT Handset

Not everyone needs or wants to carry a radio handset. But they do want instant, secure access to important, often mission-critical communications wherever they are located.

With a WAVE Mobile Communicator installed on a smartphone, tablet or custom handheld, any user can access PTT communications from any location, talking with groups of other users or individuals as required. Mapping, presence and channel activity monitoring improve situational awareness for everyone.

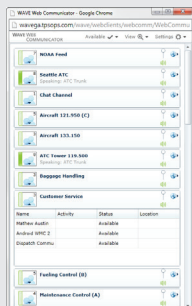
### WAVE DESKTOP COMMUNICATOR



### Access PTT Communications from Your Desktop PC

You're not a mobile worker in the field responding to events and service calls, but you're there to provide support from headquarters, a communications center or a remote location. Let's turn your desktop PC into a PTT communications hub.

### WAVE WEB COMMUNICATOR



### Use a Web Browser to Access Your WAVE Communications Channels

You're not at your own PC, or you cannot get to it quickly. Other PCs are available. That's when the WAVE Web Communicator comes in to its own. WAVE Web Communicator can manage more than 20 channels of secure, encrypted audio from inside a web page.

Using secure access to WAVE processing and management functionality on remote servers, in a hosted environment or as a Cloud-based service, any web browser attached to any IP network (wired or wireless) can provide access to WAVE-enabled communications.

## WAVE 5000 CLIENT APPLICATIONS

### WAVE Communicators Enable Your Workforce to Connect and Collaborate

Whatever the device or available network, WAVE has client applications that meet the needs of all types of users. Called WAVE Communicators, these applications provide the user interface to a WAVE communications system:

#### WAVE DISPATCH COMMUNICATOR

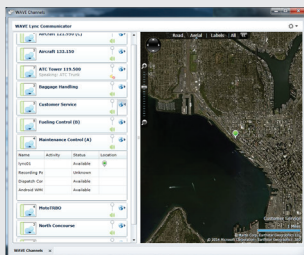


#### Scalable Dispatch Console Balancing Capabilities with Value

If you're a small to mid-size organization that has to balance system capabilities and performance with acquisition and operating costs, then you should consider the WAVE Dispatch Communicator for your console needs.

WAVE Dispatch Communicator provides advanced VoIP dispatch features that give individual dispatchers the ability to display and manage hundreds of communications channels that make up a complex and fluid communications environment. Multiple radio channels, telephone calls and other communications systems can be patched together with just a few clicks of a mouse. Activity displays, audio recording and instant replay give dispatchers a complete session history for archiving and audit trail purposes.

#### WAVE COMMUNICATOR FOR MICROSOFT LYNC AND SHAREPOINT



#### Access PTT Directly From Your Microsoft SharePoint and Microsoft Lync Communication and Collaboration Environments

As your organization grows, keeping support and administrative workers connected and collaborating effectively becomes harder. They may be required to work closely with other groups located a great distance away, or to access critical information from multiple systems that creates a sometimes unwieldy desktop experience.

Unified communications and collaboration tools from Microsoft have helped drive organizational efficiency and effectiveness through greater collaboration and easier access to important information. Microsoft Lync and Microsoft SharePoint can be enhanced with WAVE plugins that allow them to display WAVE communications channels directly on the desktop.

#### WAVE 5000 Minimum System Requirements

WAVE Communicator	Mobile	Desktop	Web	Dispatch	SharePoint	Lync
Device	Android Apple	PC (Desktop/Laptop)	PC (Desktop/Laptop)	PC (Desktop/Laptop)	PC (Desktop/Laptop)	PC (Desktop/Laptop)
Minimum Hardware Requirements		1.6 GHz x-86 processor 1.0 GB RAM, 100 MB HDD Accelerated GPU DirectX 9.0 with 64 MB RAM	1.6 GHz x-86 processor 1.0 GB RAM, 100 MB HDD Accelerated GPU DirectX 9.0 with 64 MB RAM	1.6 GHz x-86 processor 1.0 GB RAM, 100 MB HDD Accelerated GPU DirectX 9.0 with 64 MB RAM	1.6 GHz x-86 processor 1.0 GB RAM, 100 MB HDD Accelerated GPU DirectX 9.0 with 64 MB RAM	1.6 GHz x-86 processor 1.0 GB RAM, 100 MB HDD Accelerated GPU DirectX 9.0 with 64 MB RAM
OS Requirements	iOS 7.0 and higher Android 2.3 and higher	Windows XP Pro, SP3	Windows XP Pro, SP3	Windows XP Pro, SP3	Windows XP Pro, SP3	Windows XP Pro, SP3
App Store download	Apple App Store Google Play					
Platform Requirements					SharePoint Server 2007 & 2010	Lync Server 2010
Browser Requirements			Internet Explorer 7 or higher Mozilla Firefox 3.6 or higher Chrome 10 or higher		Internet Explorer 7 or higher Mozilla Firefox 3.6 or higher Chrome 10 or higher	Internet Explorer 7 or higher Mozilla Firefox 3.6 or higher Chrome 10 or higher
Network	3/4G public LTE & WiFi	LAN/WAN/WiFi	LAN/WAN/WiFi	LAN/WAN/WiFi	LAN/WAN/WiFi	LAN/WAN/WiFi

## DATA SHEET

WAVE WORK GROUP COMMUNICATIONS  
WAVE 5000

## DEPLOYING WAVE 5000

### Your organization can choose how it wants to deliver WAVE enabled communications

For the majority of deployments, hosted solutions, where WAVE software is installed and runs on your server hardware, is normal. This is particularly true when organizations are particularly sensitive to network and data security, or when organizations have extensive investments and capacity in IT infrastructure.

An alternative approach puts WAVE applications in the Cloud where they are accessed over a private network. Cloud-based PTT services offer compelling benefits, such as access to the latest WAVE software releases and significantly lower IT costs.

Motorola gives you choices. WAVE communications can be delivered either way – on premise or via the Cloud - giving you the flexibility to scale, deploy and support your communications efficiently and effectively as your organization's needs grow.

WAVE 5000 Summary	
<b>Customer Markets</b>	Public Safety / Federal Commercial
<b>Radio Integrations*</b>	Motorola ASTRO® 25 Motorola TETRA Dimetra IP Motorola MOTOTRBO™
<b>Broadband User Capacity</b>	3,000
<b>WAVE Communicators</b>	Mobile Desktop Web Dispatch Microsoft SharePoint Microsoft Lync
<b>Mobile Device Support</b>	Consumer grade iOS and Android Motorola LEX ruggedized handhelds
<b>Other Attributes</b>	IP PBX integration
* Motorola Solutions focus areas. Other radio systems via donor radio and gateways.	



For more information on WAVE 5000, go to [motorolasolutions.com/WAVE](http://motorolasolutions.com/WAVE)

For more information on WAVE Workgroup Communication solutions, go to [motorolasolutions.com/WAVE](http://motorolasolutions.com/WAVE)

Motorola Solutions, Inc.  
1301 East Algonquin Road Schaumburg, Illinois 60196, U.S.A.  
800-367-2346 [motorolasolutions.com](http://motorolasolutions.com)

MOTOROLA, MOTO, MOTOROLA SOLUTIONS and the Stylized M Logo are trademarks or registered trademarks of Motorola Trademark Holdings, LLC and are used under license. All other trademarks are the property of their respective owners. © 2015 Motorola Solutions, Inc. All rights reserved. R3-4-5011

